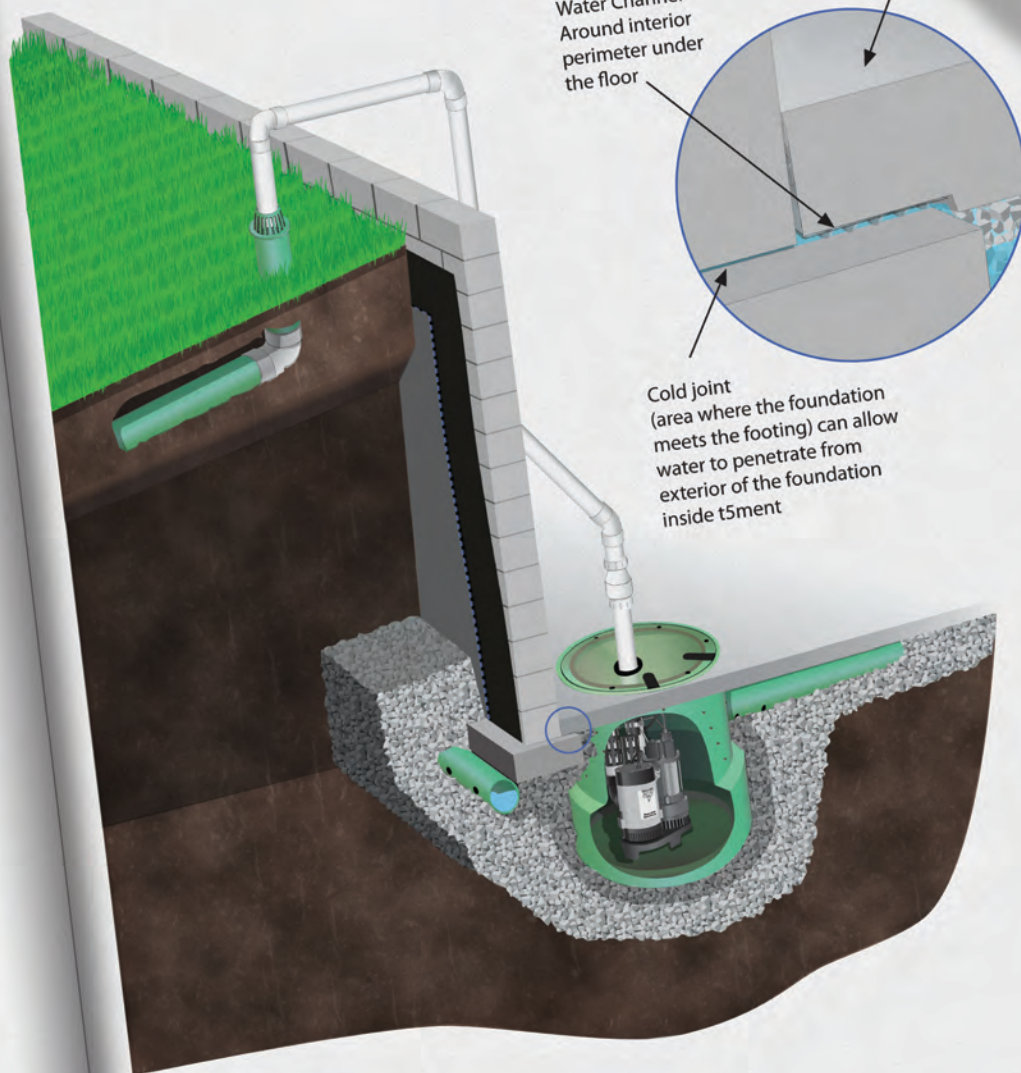




The Very Best!



Water Channel
Around interior
perimeter under
the floor

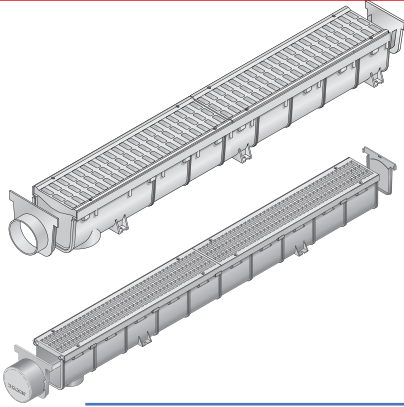
Basement
Floor

Cold joint
(area where the foundation
meets the footing) can allow
water to penetrate from
exterior of the foundation
inside basement

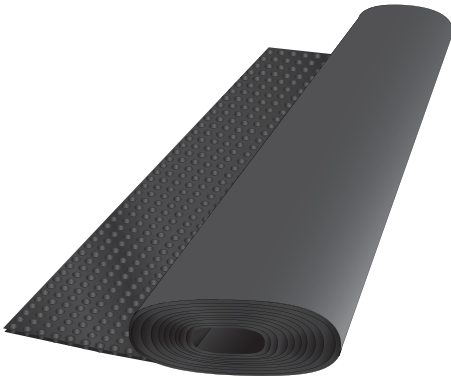
"Designed & Engineered to Perform."

ECP Waterproofing Products

"The very best"



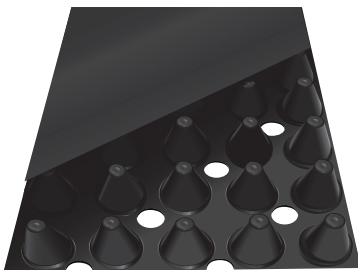
Channel Drain – The ECP Channel Drain is a lightweight drain system with interlocking joints, so connections are made quickly and easily. The modular design offers flexibility as each 40" section of channel can be snapped together for longer runs or divided down to lengths as short as 4" for smaller, interlocking sections.



Dimple Drainage Board – Sheet Drains for single side drainage applications are prefabricated products that consist of a solid, formed, three dimensional core covered with a geo-textile filter fabric bonded to the dimple side of the core.



ECP Waterproofing Membrane – Combines the durability of asphalt with the elasticity of rubber to provide a long lasting barrier against water leaks. ECP Waterproofing Membrane is roller or spray applied to a foundation to stop water from entering the basement.



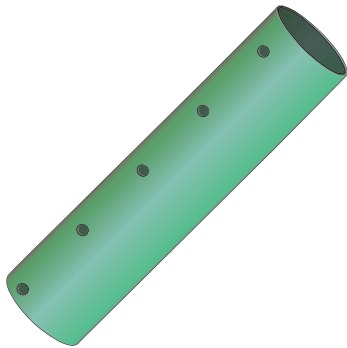
ECP Strip Drain – ECP Strip Drains are prefabricated drains that consist of a high-profile, perforated, three-dimensional core (6" high x 1" wide x 150' long) that is fully wrapped with a filter fabric.

ECP Waterproofing Products

"The very best"



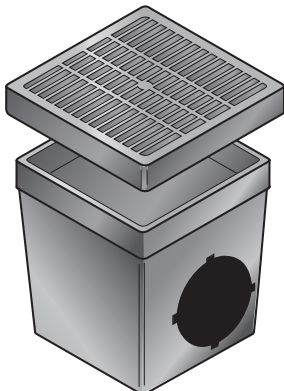
EZ Flow Gravel Free French Drain System – EZflow is a gravel-free alternative to a traditional French Drain system. Each EZflow section contains a 10 foot-long plastic corrugated pipe surrounded by EZflow Poly Rock aggregate structurally engineered to have an increased void space. Pipe and aggregate are enclosed in a strong and durable mesh material to prevent clogging.



ECP Drain Pipe - The ECP 400 Series Drain Pipe is the industry leading rigid drainage system for use on interior and exterior foundation drains, curtain and landscape drains, retaining walls, crawlspace and any other sub-surface water management applications. This drainage system is strong, easy to use and environmentally friendly. The ECP 400 Series drainage system utilizes the time proven principals used in French Drain systems while eliminating the problems.



ECP Water Channel – The ECP Water channel is an interior basement floor drainage system for new construction and retrofitting. Engineered to sit on top of the footing to create a pathway for water to flow from the wall and cold joint, across the footing and into the drain system. This unique design provides added strength to the channel to prevent collapsing and warping along the wall and creates a thermal break between the footing and slab.



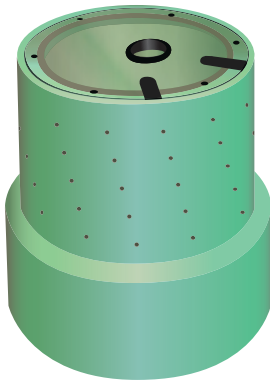
Catch Basins & Grates – Use our ECP catch basins and grates to protect property against water damage caused by excess rainwater or irrigation. Use to collect water from downspouts, planter areas, and landscape sections.

ECP Waterproofing Products

"The very best"



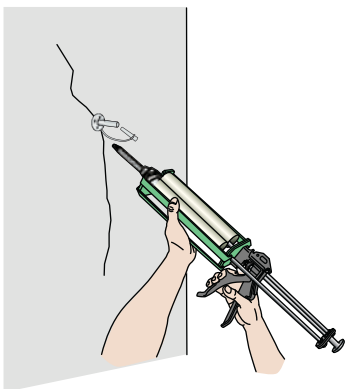
Crawl Space Encapsulation – Earth Contact Products (ECP) Crawlspace Vapor Barrier and Encapsulation products are designed to stop water from moving into living spaces and stop ground moisture from rotting wood in crawlspaces. Vapor barriers are a key component to waterproofing basements and crawlspaces.



ECP Sump Basin – The ECP sump pump basin is the most efficient, safe and innovative sump design available. The ECP sump basin is molded from high strength, impact resistant polyethylene to provide years of service in collecting water from around foundations. The unique bell shape, of the ECP Sump Basin, not only makes sump pump systems more efficient, but also increases the life of basement drainage systems.



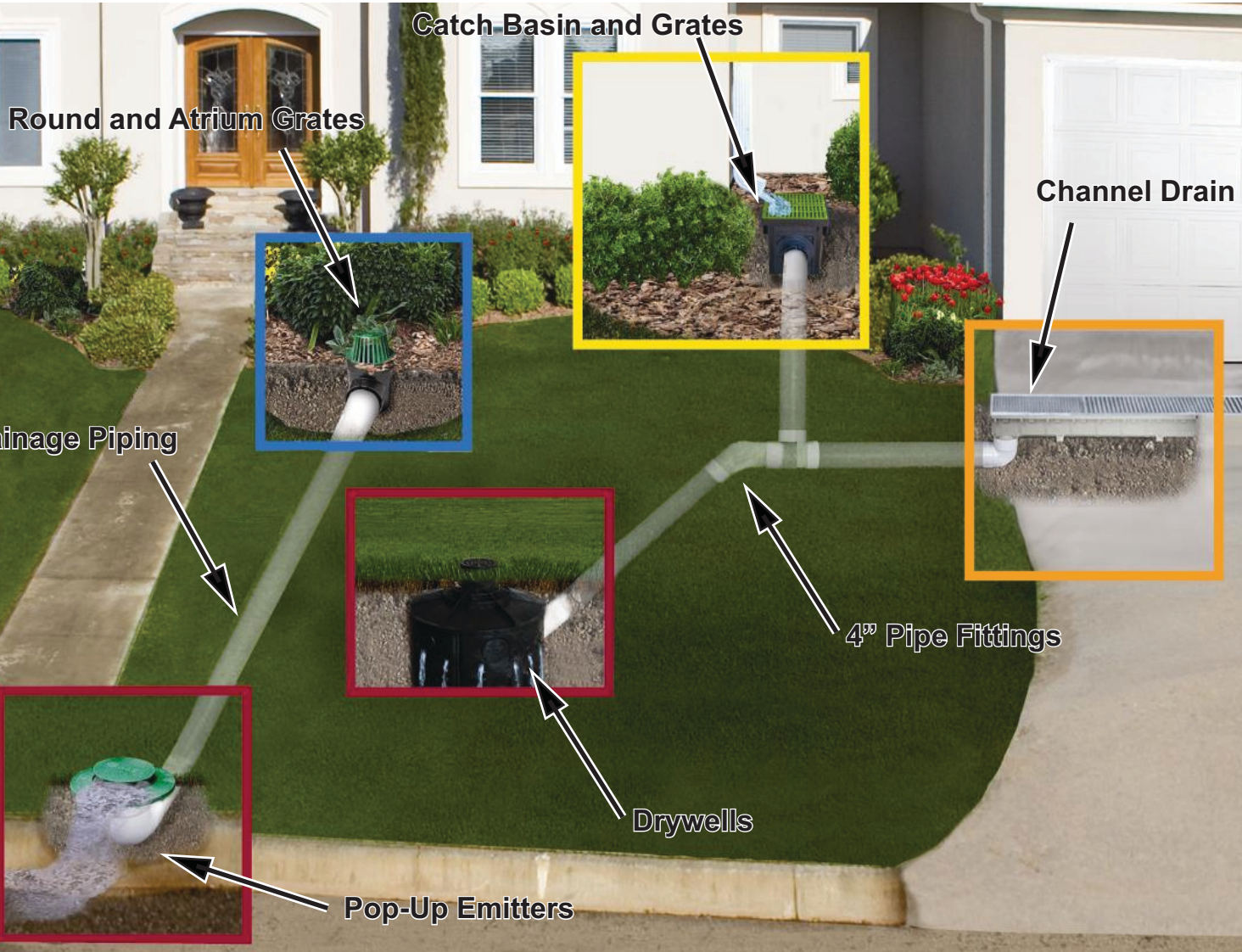
ECP Sump Pumps - The ECP lineup of sump pumps include primary sumps from 1/3 to 1/2 horsepower that can pump up to 5,000 gallons per hour. Our battery backup sump pumps are the most energy efficient lineup of 12 volt backup sump pumps on the market, with high pumping capacities and infamous energy conservation.



Crack Injection – ECP Epoxy and Polyurethane injection resins are designed to seal cracks and eliminate water and air leaks from basement and crawlspace walls. Both systems will effectively fill the crack while keeping water and insects out of your home. ECP's network of foundation specialists can provide an effective permanent solution to wet basements and leaking cracks.

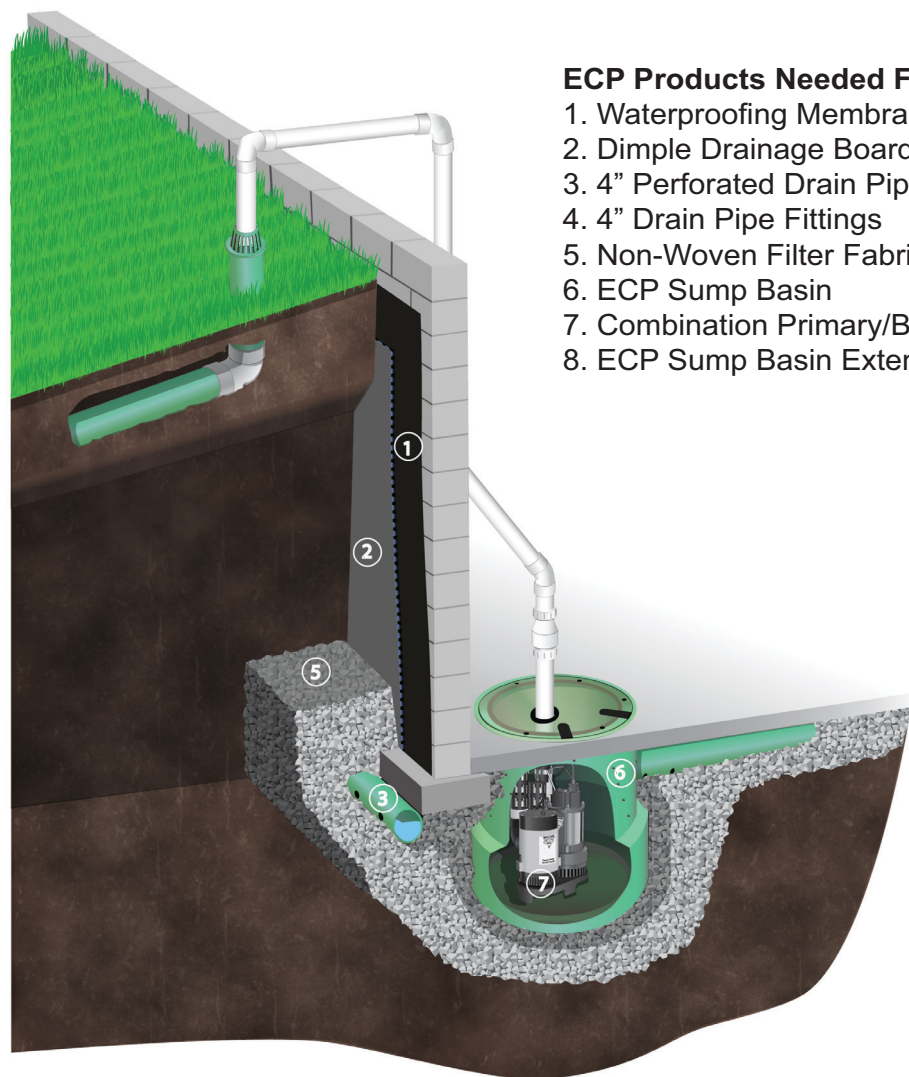
ECP Surface Drainage Solutions

Fix all of your problems.



ECP Exterior Waterproofing System

The most effective way to waterproof your basement.



ECP Products Needed For Exterior Waterproofing Installation

1. Waterproofing Membrane
2. Dimple Drainage Board
3. 4" Perforated Drain Pipe
4. 4" Drain Pipe Fittings
5. Non-Woven Filter Fabric
6. ECP Sump Basin
7. Combination Primary/Back-up Sump Pump
8. ECP Sump Basin Extension (if necessary)

Related exterior surface drainage products by ECP:

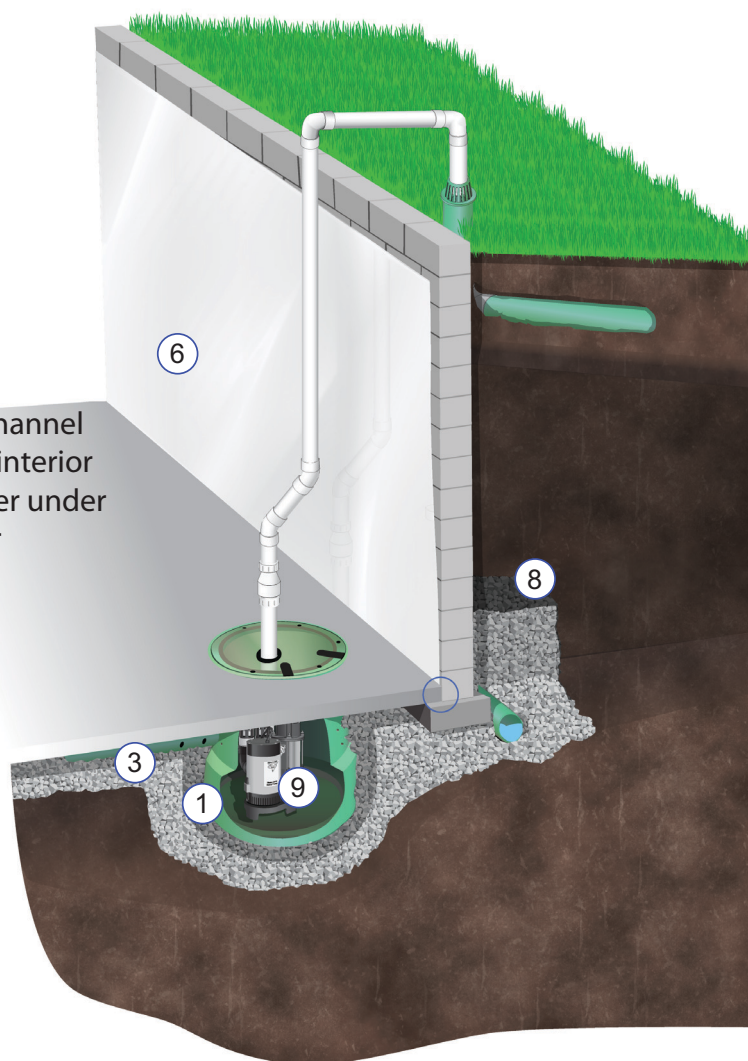
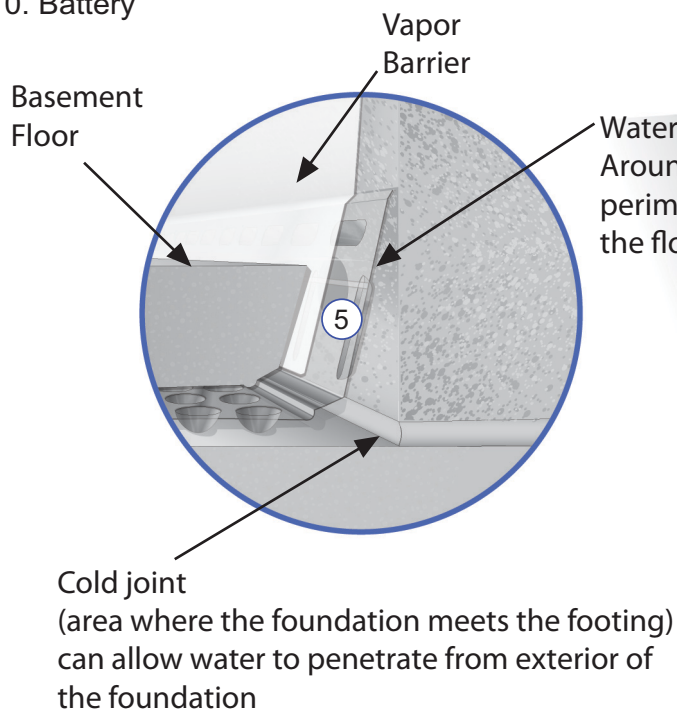
- Sump pump discharge freeze guard
- 4" solid drain pipe
- Pop-up emitters
- Catch basins
- Downspout adapter
- Channel drain
- Dry-Well
- Strip Drain

ECP Interior Waterproofing System

Keep your system sealed.

ECP Products Needed For Interior Waterproofing Installation

1. ECP Sump Basin
2. ECP Sump Basin Extension (if necessary)
3. 4" Perforated Drain Pipe
4. 4" Drain Pipe Fittings
5. Water Channel
6. Vapor Barrier (if necessary)
7. Vapor Barrier Tape (if necessary)
8. Non-Woven Filter Fabric
9. Combination Primary/Back-up Sump Pump
10. Battery



Related drainage products by ECP:

- Check valves
- Water sensor alarm
- Sump pump discharge freeze guard
- 4" solid drain pipe
- Pop-up emitters
- Catch basins
- EZ Flow gravel-free French drain system

Causes of Water Problems

Why is it happening?

Clogged Gutters

The gutter system is the most important and effective way to keep your home dry. Keep the gutters free of leaves and debris to ensure water flow.

Improper Grading

The soil grading around the perimeter of home needs to have slope or fall away from the foundation. Areas not sloped properly need fill dirt to drain effectively.

Downspout Discharge

If downspouts don't effectively discharge water away from home (6-10 feet), they could be adding to the problem. A "recycling effect" can take place where downspout discharge runs toward the home and into your footing drain.

Hydrostatic Pressure Build-Up

Hydrostatic pressure on a basement will cause the water to find the path of least resistance into your basement causing flooding.

Clogged or No Footing Drains

Having a working French drain piping system around the perimeter of the home is essential.

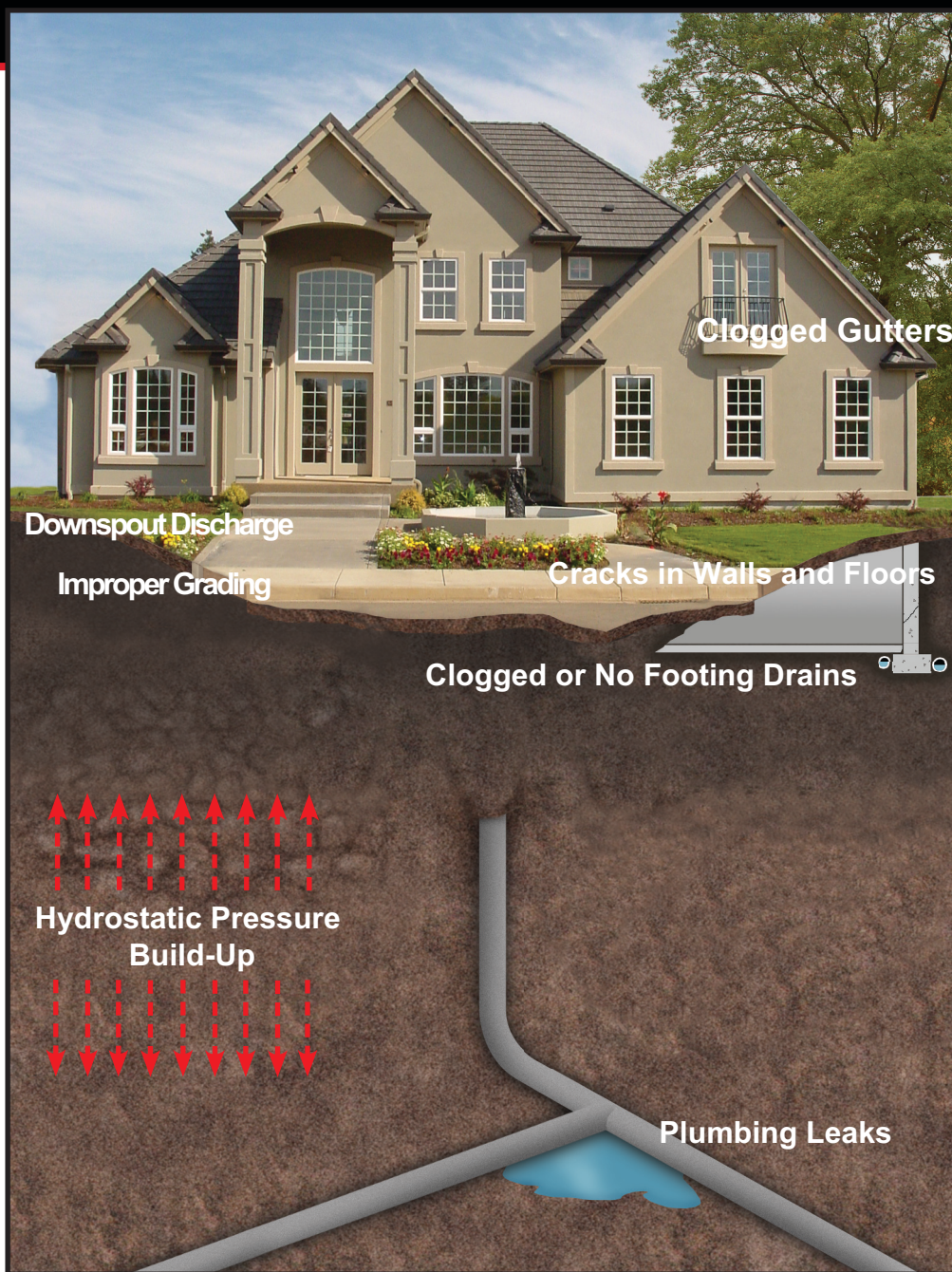
Footing drains is your home's way of controlling hydrostatic pressure. As always, proper installation techniques are the key to the lifespan of the system.

Cracks in Walls and Floors

Unfortunately, concrete will eventually crack and water will always find it. Cracks in walls and floors will allow water, which is under hydrostatic pressure, to enter.

Plumbing Leaks

Interior and exterior plumbing leaks are obviously a major contributor to water damage to a structure. Exterior leaks could be putting undo hydrostatic pressure on your basement.



Signs of Water Problems

Know the signs before it's too late.



Your Basement

- Foundation Seepage
- Cracks in Walls
- Bowed Walls
- Sinking Foundation



Your Home's Interior

- Musty Odor
- Mold and Mildew
- Water Stains on Walls/Floors
- Peeling Paint
- Wet Carpet



Your Home's Exterior

- Standing/Pooling Water
- Soil Settlement
- Ineffective Gutter/Downspout Drainage
- Grade Falling Toward Structure

History

EARTH CONTACT PRODUCTS, L.L.C., is a family owned company, based in Olathe , Kansas . This company was built upon ECP's Steel Piering System that has led to the development of other foundation repair, anchoring, waterproofing and underpinning products.

Today, ECP has a complete product line of Steel Piers, Helical Torque Anchors, Plate Anchors, Soil Nails, Micropile Brackets and Waterproofing. These products provide "The Very Best" solutions to residential, commercial or industrial deep foundation problems. You can be assured that whether you are working on a crawlspace residential job or a large municipal project, Earth Contact Products has the products and know how to answer your questions and provide you with the correct answer.



Our 95,000 square feet state of the art fabrication facility, with Robotic welding, CNC capabilities and certified welders, enable ECP to custom configure products to fit Engineer specific foundation repair projects. Whether you need a custom fabricated pier or a product directly from our vast inventory call ECP today and see how our Engineering department and staff can help you today.

Our dedication is to our contractors and the people that they serve, by providing the highest quality foundation repair products in the industry and standing behind them for the property owners that they serve.

Mission Statement

Earth Contact Products will be "**The Very Best**" manufacturer in our industry, by providing quality products and services in a timely manner at a competitive price.



Earth Contact Products

Phone: 913-393-0007

Fax: 913-393-0008

Toll Free: 866-327-0007

15612 South Keeler Terrace

Olathe, Kansas 66062

www.earthcontactproducts.com

"Designed and Engineered to Perform"